

# new perspectives



# outdoor collection

# on scandinavian design

**Muuto's Outdoor Collection characteristically merges aesthetics and craftsmanship with functionality and an honest expression, incorporating enduring materials, weather-resistant finishes and a bold range of colors. It brings a distinctive Scandinavian simplicity and ease to the outdoor space.**

**new perspectives on scandinavian design**

Muuto is rooted in the Scandinavian design tradition, characterized by enduring aesthetics, functionality, craftsmanship, and an honest expression. By expanding this heritage with forward-looking materials, techniques, and bold creative thinking, our ambition is to deliver new perspectives on Scandinavian design.

# tuning into

Our growing selection of outdoor furniture leans into another guiding principle—nature’s inherently grounding effect on us, one that contributes to a noticeable sense of *calm and well-being*. We still find ourselves most authentically in nature.



# nature

Studies\* have shown that spending just twenty minutes in nature significantly lowers the levels of the stress hormone cortisol, giving new meaning and urgency to the outdoor spaces, be it a balcony, garden, patio, or terrace. The outdoor space is a source of joy, respite and self-expression, a place to enjoy in solitude and in gathering—across the span of seasons.

\* Susan Magsamen  
& Ivy Ross (2023).  
Your Brain on Art.

**Settle Outdoor Series**

**6**



Settle Lounge Chair w. armrest    Settle Sofa 2-Seater w. armrest    Settle Sofa 3-Seater w. armrest    Settle Lounge Bed w. armrest    Settle Cushion



Settle Lounge Chair    Settle Sofa 2-Seater    Settle Sofa 3-Seater    Settle Lounge Bed    Outdoor Covers

**Linear Steel Series**

**20**



Linear Steel Armchair    Linear Steel Side Chair    Linear Steel Counter Stool    Linear Steel Bar Stool    Linear Steel Lounge Chair



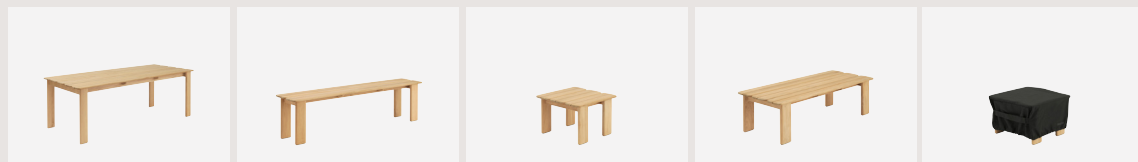
Linear Steel Bench    Linear Steel Bench w. backrest    Linear Steel Table    Linear Steel Café Table    Linear Steel Café Table



Linear Steel Coffee Table    Linear Steel Seat Pads    Outdoor Cover

**Assemble Outdoor Series**

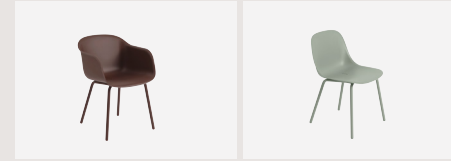
**36**



Assemble Table    Assemble Bench    Assemble Coffee Table    Assemble Coffee Table    Outdoor Covers

**Fiber Outdoor Chair**

**44**



Fiber Outdoor Armchair    Fiber Outdoor Side Chair

**Dream View Bench**

**46**



Dream View Bench    Dream View Bench

**Halves Coffee Table    54**



Halves Coffee Table

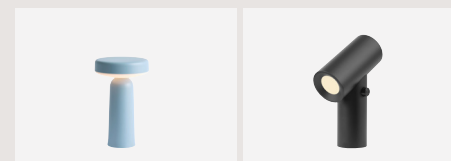
**Flow Series    56**



Flow Coffee Table    Flow Trolley

**Ease & Beam Portable Lamps**

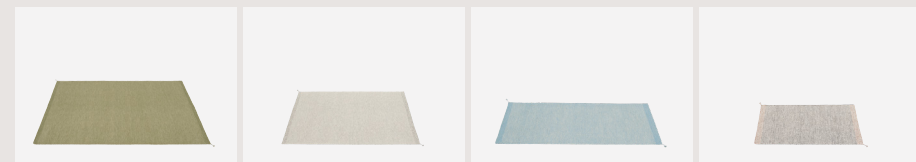
**58**



Ease Portable Lamp    Beam Portable Lamp

**Ply Rug Recycled Polyester**

**62**



Ply Rug\* Recycled Polyester    Ply Rug\* Recycled Polyester    Ply Ryg Recycled Polyester    Ply Rug\* Recycled Polyester

# settle outdoor



# series





Settle Sofa 3-Seater

Settle Lounge Chair

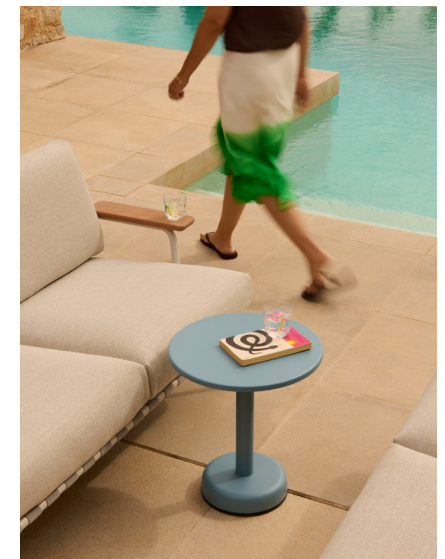
Assemble Coffee Table



Settle Sofa 2-Seater  
w. armrest

Linear Steel Coffee Table

Crafted with a galvanized, primed and powder-coated steel frame, the series offer effective *corrosion resistance*. Plush cushions, made with *quick-dry foam* and durable outdoor textiles, dry swiftly after rain and stay resilient year-round when protected with an outdoor cover.



Linear Steel Coffee Table





Settle Lounge Chair  
w. armrest

Settle Sofa 2-Seater  
w. armrest

Settle Sofa 3-Seater  
w. armrest

Linear Steel  
Coffee Table

Ease Portable Lamp

\*Muuto is an FSC™-certified  
company (FSC-CO28824).

Rooted in Scandinavian  
heritage, the Settle Outdoor  
Series blends *functionality and  
aesthetics* with materials like  
smooth powder-coated steel,  
warm wooden armrests made  
from FSC™-certified\* wood,  
and soft textiles, *inviting you  
to settle into its comfort*





Settle Sofa 2-Seater  
w. armrest

Settle Lounge Chair  
w. armrest

Linear Steel Coffee Table



Settle Lounge Bed & Cushions

Assemble Coffee Table

The Settle Outdoor Seating Series features replaceable belts, armrests, and cushion covers, ensuring effortless maintenance and keeping your outdoor space elegant *season after season*.





## settle outdoor series

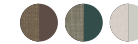
by Anderssen & Voll

**Materials:** Upholstered cushions with quick-dry foam\*. Frame in galvanized, primed and powder-coated steel. Armrests made from FSC™-certified (FSC-C028824) wood.

**Warranty:** 5 years

**Add-on:** Outdoor cover — The Outdoor Cover is made from a polyester outer layer, TPU membrane and polyester inner velvet.

Ribbed Weave 5 / Taupe, Ribbed Weave 2 / Dark Green, Laze 1 / Grey



Made-to-order upholstery is available in selected Delta by Maharam colors.

Please note that Settle without armrest is made-to-order.



\*Quick-dry foam, known for its durability and resilience, is designed to allow rainwater to pass through directly, promoting rapid drainage and preventing the absorption of water, unlike standard cushions. If exposed to moisture, it is advised that the cushions be tipped on their side to enable water to drain out effectively.

The air circulation keeps air moving, preventing mold accumulation in the cushions.



**Settle Lounge Chair w. armrest**  
cm H73 x W86,5 x D84 - SH44  
in H 28.7 x W34 x D33 - SH17.32



**Settle Sofa 2-Seater w. armrest**  
cm H73 x W152,5 x D84 - SH44  
in H 28.7 x W60 x D33 - SH17.32



**Settle Sofa 3-Seater w. armrest**  
cm H73 x W218,5 x D84 - SH44  
in H 28.7 x W86 x D33 - SH17.32



**Settle Lounge Bed w. armrest**  
cm H86,5 x W150 x D166 - SD126  
in H34 x W59 x D65.35 - SD49.6



**Settle Cushion**  
cm H35 x W60 x D16  
in H13.78 x W23.62 x D6.3



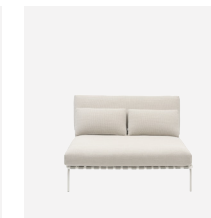
**Settle Lounge Chair**  
cm H73 x W69 x D84 - SH44  
in H 28.7 x W27.17 x D33 - SH17.32



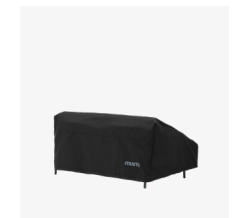
**Settle Sofa 2-Seater**  
cm H73 x W144 x D84 - SH44  
in H 28.7 x W56.69 x D33 - SH17.32



**Settle Sofa 3-Seater**  
cm H73 x W201 x D84 - SH44  
in H 28.7 x W79 x D33 - SH17.32



**Settle Lounge Bed**  
cm H86,5 x W124,5 x D166 - SD126  
in H34 x W49 x D65.35 - SD49.6



**Outdoor Cover**  
Available in black for all sizes.

# linear



Linear Steel Series brings together clean, inviting lines, *generous comfort and lasting quality*—without compromise.



Linear Steel Table    Linear Steel Bench    Linear Steel Armchair

# steel

# series









Linear Steel Table

Linear Steel Bench w. backrest

Ease Portable Lamp



Linear Steel Table

Linear Steel Bench

“The Linear Steel Series is uncompromising at its heart—uncompromising in its expression, uncompromising in its strength, and uncompromising in its comfort.”

— Thomas Bentzen



Produced in Europe and made from galvanized steel with a weather-resistant, deep matt, UV-resistant powder-coated finish. Each design is built to resist corrosion and endure outdoor conditions.



Linear Steel Lounge Chair



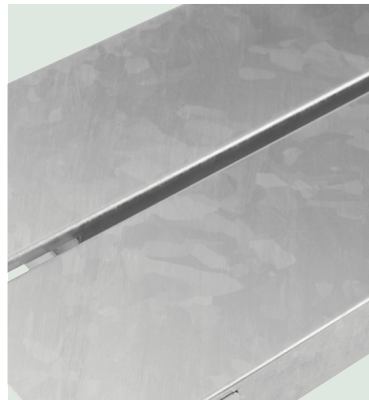
Linear Steel Café Table

Linear Steel Armchair

## Industrial look & evolving patina



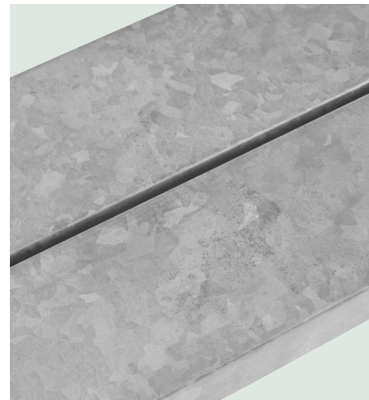
34



1. The warm galvanized version has a shiny metallic finish when newly galvanized.



2. Over time, clouding, streaking, and tonal variations may appear—natural signs of the surface developing its patina. Surface variation and texture are inherent to the warm galvanization process and contribute to the product's final character.



3. After approx. one year, the galvanized steel will reach its mature state, resulting in a neutral gray finish with a mineral-like surface quality.



Linear Steel Bench - Warm Galvanized

# linear steel series

by Thomas Bentzen

Materials: Galvanized, primed, and powder-coated steel.

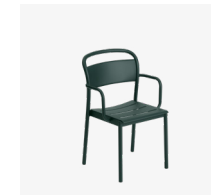
Warranty: 3-5 years

**Add-on: Seat Pads** — The Seat Pads are made from upholstered foam with black anti-slip backing.  
**Outdoor cover** — The Outdoor Cover is made from a polyester outer layer, a TPU membrane, and a polyester inner velvet.

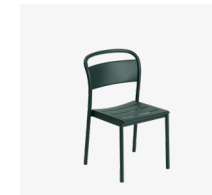
Anthracite Black, Grey, Dark Green, Burnt Orange, Pale Blue, Taupe, Warm Galvanized steel\*



\*Please note that Warm Galvanized Steel is only available for the Linear Steel Bench and the Linear Steel Tables in 140 cm and 200 cm.



**Linear Steel Armchair**  
 cm H85,1 x W55,4 x D54 - SH46  
 in H33.5 x W21.8 x D21.3 - SH18.1



**Linear Steel Side Chair**  
 cm H85,1 x W49,6 x D54 - SH46  
 in H33.5 x W19.5 x D21.3 - SH18.1



**Linear Steel Counter Stool**  
 cm H78,7 x W52,3 x D46,5 - SH65  
 in H31 x W20.6 x D18.3 - SH26.6



**Linear Steel Bar Stool**  
 cm H88,7 x W53,5 x D6,5 - SH75  
 in H34.9 x W21.1 x D18.3 - SH29.5



**Linear Steel Lounge Chair**  
 cm H75,4 x W68,4 x D70,5 - SH38,8  
 in H29.7 x W26.9 x D27.8 - SH15.3



**Linear Steel Café Table**  
 cm H73,5 x Ø70  
 in H28.9 x Ø27.6



**Linear Steel Café Table**  
 cm H95 x Ø70  
 in H37.4 x Ø27.6



**Linear Steel Café Table**  
 cm H105 x Ø70  
 in H41.3 x Ø27.6



**Linear Steel Coffee Table**  
 cm H47 x Ø42  
 in H18.5 x Ø16.5



**Linear Steel Coffee Table**  
 cm H40 x Ø70  
 in H15.5 x Ø27.5



**Linear Steel Café Table**  
 cm L70 x H73,5 x W70  
 in L27.6 x H28.9 x W27.6



**Linear Steel Café Table**  
 cm L70 x H95 x W70  
 in L27.6 x H37.4 x W27.6



**Linear Steel Café Table**  
 cm L70 x H105 x W70  
 in L27.6 x H41.3 x W27.6



**Linear Steel Bench**  
 cm L110 x H45,5 x D39  
 in L43.3 x H17.9 x D15.4



**Linear Steel Bench**  
 cm L170 x H45,5 x D39  
 in L66.9 x H17.9 x D15.4



**Linear Steel Bench w. backrest**  
 cm L110 x H79 x D50,8  
 in L43.3 x H31.1 x D20



**Linear Steel Bench w. backrest**  
 cm L170 x H79 x D50,8  
 in L67 x H31.1 x D20



**Linear Steel Table**  
 cm L140 x H73,5 x W80  
 in L55.1 x H28.9 x W31.5



**Linear Steel Table**  
 cm L200 x H73,5 x W80  
 in L78.7 x H28.9 x W31.5



**Linear Steel Table**  
 cm L220 x H73,5 x W95  
 in L86.6 x H28.9 x W37.4



**Outdoor Cover**  
 Available in Black for Linear Steel Table in 140, 200 and 220 cm.



**Linear Steel Seat Pads**  
 Available in Twitell Dark Grey or Light Grey for Bar & Counter Stools, Chairs, Lounge Chairs & Benches.



# assemble



# outdoor

# series





Assemble Bench



Settle Lounge Bed

Assemble Coffee Table

The Assemble Series reimagines outdoor furniture through a focus on material honesty and refined detailing. Made using FSC™-certified (FSC-C028824) teak, its broad planks and softened edges lend a warm, tactile presence to the table. True to its name, Assemble invites people to *gather, connect, and linger.*

42



Settle Sofa 2-Seater w. armrest

Assemble Coffee Table

Settle Lounge Chair



## assemble outdoor series

by Anderssen & Voll

**Materials:** All fitted with plastic glides for outdoor use.  
FSC™-certified (FSC-C028824) teak.

**Warranty:** 5 years

**Add-on:** The outdoor cover is made from polyester with a TPU membrane that provides water-repellent protection. The interior is lined with soft polyester velvet.

Natural



45

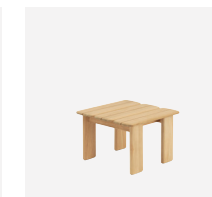
Teak is a durable hardwood well-suited for outdoor use. As a natural material, teak will display variations in color and grain from one piece to another. When left untreated, the wood will gradually develop a silver-grey patina. Over time, outdoor exposure may also lead to small cracks at the ends of the planks and slight warping, which can result in minor height differences between them. Direct sunlight may cause temporary color variations if objects are left on the surface for extended periods; these will even out once the object is removed. To maintain a deeper, warmer tone, clear oil suitable for outdoor use can be applied periodically.



**Assemble Bench**  
cm L180 x W36,4 x H45  
in L70,87 x W14,3 x H17,7



**Assemble Table**  
cm L220 x W92,2 x H73  
in L86,6 x W36,2 x H28,7



**Assemble Coffee Table**  
cm L55 x W55 x H36  
in L21,65 x W21,65 x H14,17



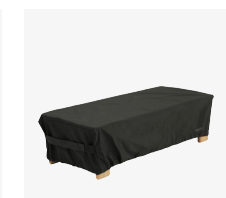
**Assemble Coffee Table**  
cm L135 x W55 x H36  
in L53,15 x W21,65 x H14,17



**Outdoor Cover**



**Outdoor Cover for Coffee Table**  
cm W59 x D59  
in W23,23 x D23,23



**Outdoor Cover for Coffee Table**  
cm W139 x D59  
in W54,72 x D23,23





Fiber Outdoor Chair

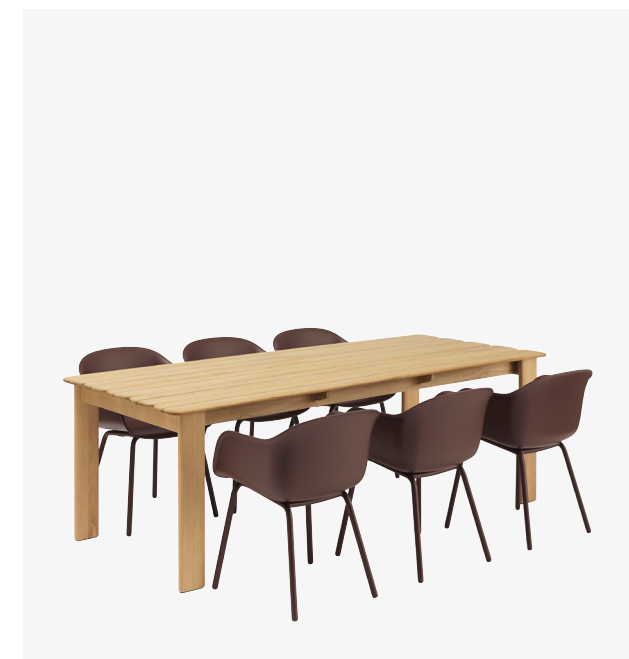
## fiber outdoor chair

by Iskos-Berlin

**Materials:** The shell is made from 100% recycled plastic mixed with UV stabilizers that keep color-fading at a minimum, protecting it from the impact of the sun. Base in galvanized and powder-coated steel. The chair features drain holes to prevent water accumulation.

**Warranty:** 5 years

Anthracite Black, Grey, Dusty Green, Brown Red



**Fiber Outdoor Armchair**  
cm H77 x W54,5 x D56 - SH46  
in H30.3 x W21.5 x D22 - SH18.1



**Fiber Outdoor Side Chair**  
cm H77 x W49,5 x D53 - SH46  
in H30.3 x W19.5 x D20.9 - SH18.1



# dream view



48



49

# bench





“I wanted to create a design that draws the viewer’s gaze upward, curating moments of focus and daydreaming while gazing”

- Lise Vester

Dream View Bench







## dream view bench

by Lise Vester

**Materials:** Rolled brushed stainless steel sheet with welded stainless steel sides.

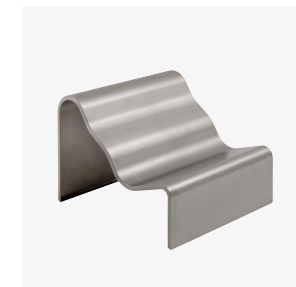
**Warranty:** 5 years

**Add-on:** Floor mounting option available. Felt glides for indoor use.

Brushed Metal



55



**Dream View Bench**  
cm D110 x W100 x H80 x SH32,3  
in D43.3 x W39.4 x H31.5 x SH12.7



**Dream View Bench**  
cm D110 x W60 x H80 x SH32,3  
in D43.3 x W23.6 x H31.5 x SH12.7

The Halves Coffee Table blends sculptural form with enduring materiality, creating a versatile statement for any setting. Crafted entirely from terrazzo, it offers a tactile, stone-like surface that is both durable and refined.

## halves coffee table

by MSDS

**Materials:** High-quality, cement-based terrazzo and treated with a water and oil repellent stone sealer. Terrazzo consists of natural stone chips set in a resilient cement matrix, resulting in subtle variations in pattern, color, and texture that make each table unique. The table's smooth, solid finish is suitable for both indoor and outdoor use. When placed outdoors, the material will naturally weather and develop a distinctive patina over time. Fitted with plastic glides suitable for indoor/outdoor use.

**Warranty:** 3 years

Off-White terrazzo, Light Taupe terrazzo



57

**Halves Coffee Table**  
cm Ø85 x H36  
in Ø33.5 x H14.4



# flow series

by Normal Studio

Materials: Powder-coated steel.

Warranty: 3-5 years

Grey\*, Taupe



\*Please note that the Flow Trolley is only available in Taupe for outdoor use.



Made from powder-coated steel, the finish enhances the Flow Series' durability, making it resistant to corrosion and perfect for outdoor and indoor use.



**Flow Coffee Table**  
cm L95 x H40,06 x W5,5  
in L37.4 x H15.8 x W3.6



**Flow Trolley — 2-Layer**  
cm L57,4 x H57,2 x W41,8  
in L22.6 x H22.5 x W16.5



**Flow Trolley — 3-Layer**  
cm L57,4 x H89,7 x W41,8  
in L22.6 x H35.32 x W16.5



The Flow Series features a unique two- or three-layer structure and perforations for a light, airy appearance. Equipped with durable rubber and steel wheels, it moves smoothly and quietly.





## **ease** **portable lamp**

*by Johan Van Hengel*

**Materials:** ABS plastic with an integrated LED light source.

**Warranty:** 3 years

CE UK  IP54 

Black, Grey, Taupe, Light Blue



Quality ambiance anywhere

Ease Portable Lamp is a dimmable, battery-powered portable lamp with an IP54 rating, striking a versatile balance between quality, atmospheric, and functional lighting.



**Ease Portable Lamp**  
cm H21,5 x Ø13,16  
in H8.46 x Ø5.18



# beam portable lamp

by Tom Chung

## Materials:

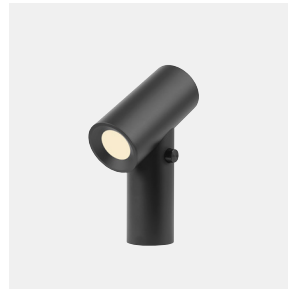
Black: Extruded and anodized aluminum.

Polished Aluminum: Extruded, polished, and anodized aluminum.

Warranty: 3 years

◆ IP56 ♻️ CE ♻️

Black, Polished Aluminum



**Beam Portable Lamp**  
cm H26.1 x W18.7 x D8.6  
in H10.3 x W7.4 x D3.4



62





## ply rug recycled polyester

by Margrethe Odgaard

Materials: 100% recycled polyester.

Warranty: 3 years

Black / White, Moss Green, Light Blue, Off-White



65

### Longlasting for seasons

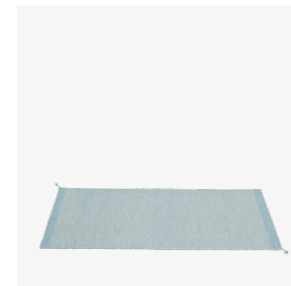
Suitable for both indoor and outdoor use. When placed outside, provide airflow under the rug for proper drying; do not let the rug sit in standing water. To store the rugs until the following season, roll them up when they are clean and fully dry and store them in dry place.



Ply Rug Recycled Polyester  
cm L300 x W200  
in L118.1 x W78.8



Ply Rug Recycled Polyester  
cm L240 x W170  
in L94.5 x W66.9



Ply Rug Recycled Polyester  
cm L200 x W80 cm  
in L78.8 x W31.5



Ply Rug Recycled Polyester  
cm L140 x W85  
in L55.1 x W33.5





#### Thank you

Ancher Studio  
 Bodum  
 Bongusta  
 Casa Cubista  
 Magniberg  
 Phanta  
 Flames  
 Tekla

#### Availability

Please note that all variants are subject to stock availability and certification across regions. Please check availability with your local retailer.

#### Prices

Check our website [muuto.com](https://muuto.com) for the most recent and valid prices in your location.

#### Warranty

All warranties are valid for wholesale orders.

#### Downloads

Find more product information, product fact sheets, assembly instructions, lifestyle images, packshots and much more on our download site.

[download.muuto.com](https://download.muuto.com)

#### Photography

Petra Bindel  
 Mikkel Tjellesen  
 Benjamin Lund  
 Maya Matsuura

#### Styling

Pernille Vest

#### Printing

Reklametryk, Denmark, January 2026  
 Subject to publisher's and printer's errors.

#### Join Us

Sign up for our newsletter or follow us on social media to stay in the loop on new product releases, case stories and events.

[muuto.com/newsletter-sign-up](https://muuto.com/newsletter-sign-up)  
[instagram.com/muutodesign](https://instagram.com/muutodesign)  
[pinterest.com/muuto](https://pinterest.com/muuto)  
[facebook.com/muuto](https://facebook.com/muuto)  
[linkedin.com/company/muuto](https://linkedin.com/company/muuto)



Browse our Outdoor Collection online.

Muuto Head Office  
 Østergade 36-38  
 DK-1100 Copenhagen,  
 Denmark

For more information  
 visit [muuto.com](https://muuto.com)

